



## FAQ

Frequently asked questions

---

Online measure value forcing



RS3

# Online measure value forcing

**Question:**

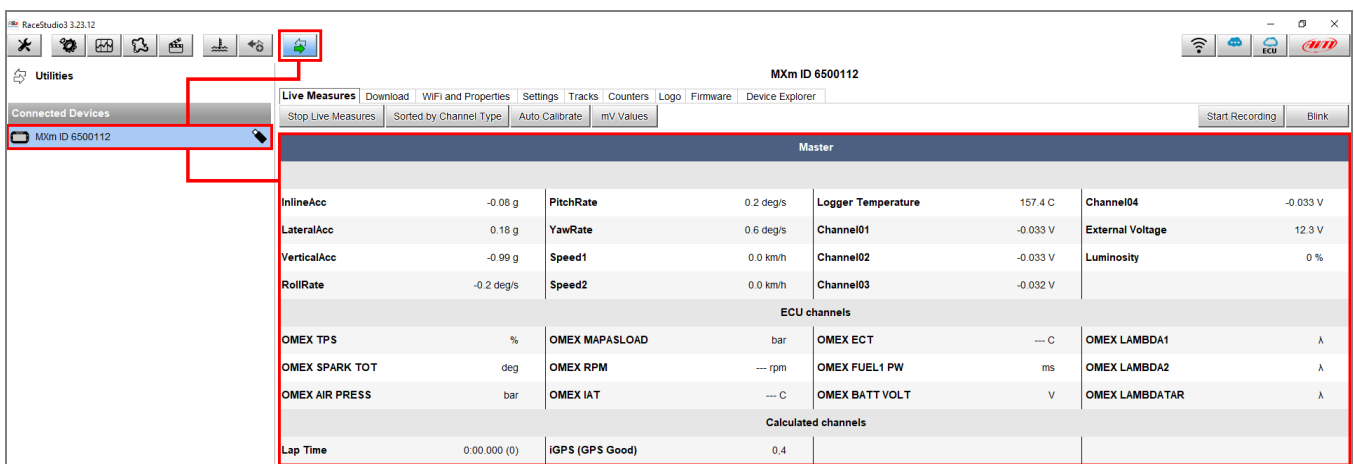
How can I verify that my device alarms/icons are correctly configured, even if I cannot test them directly on my vehicle?

**Answer:**

Starting from Race Studio 3 release **3.23.08**, it is possible to force each channel value, to be able to simulate its real behavior (even without installing it on your vehicle), following the steps below:

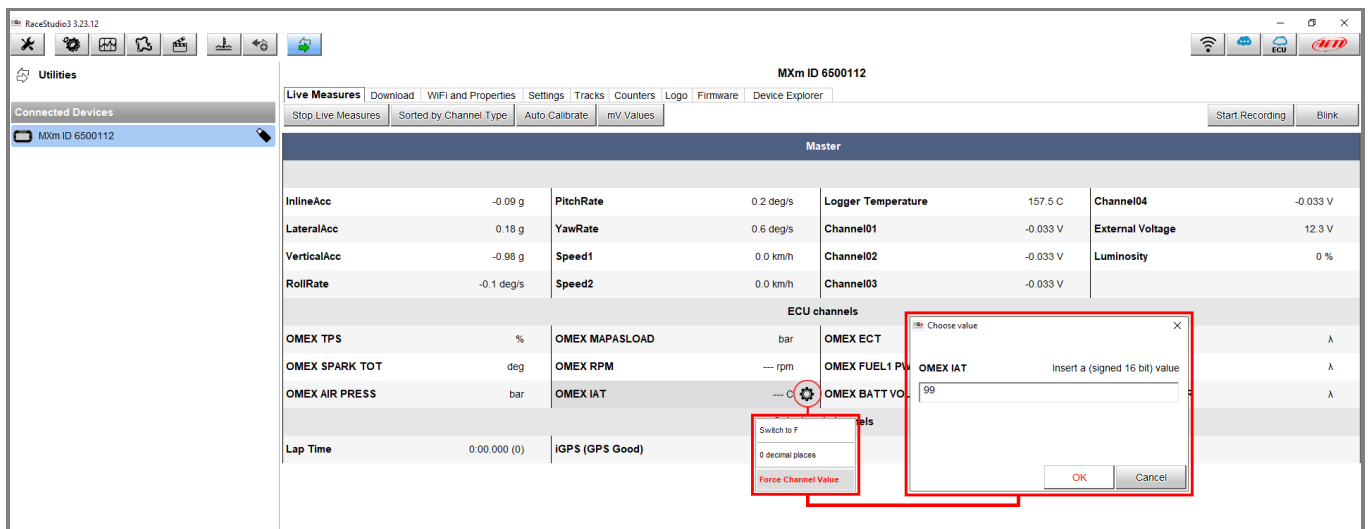
- N.B.:**
- This feature is available for MXG 1.2, MXS 1.2, MXS 1.2 Strada, MXm, Solo 2 DL starting from firmware version 02.24.04 onwards.
  - It is possible to force the channels values only if the Online view is enabled (“Start Live Measures” button).
  - It is possible to force the value of each displayed channel into the Live Measures tab except for calculated channels.
  - It is possible to manually force both positive and negative values.
  - Check the WiFi settings and the Start Data Recording conditions; the Auto WiFi will stop the connection when the unit starts logging data.

- Once the system has been connected to Race Studio 3 via Wi-Fi or USB, enter the Live Measures tab (Connected Device menu): by default, the Online measures view is enabled.

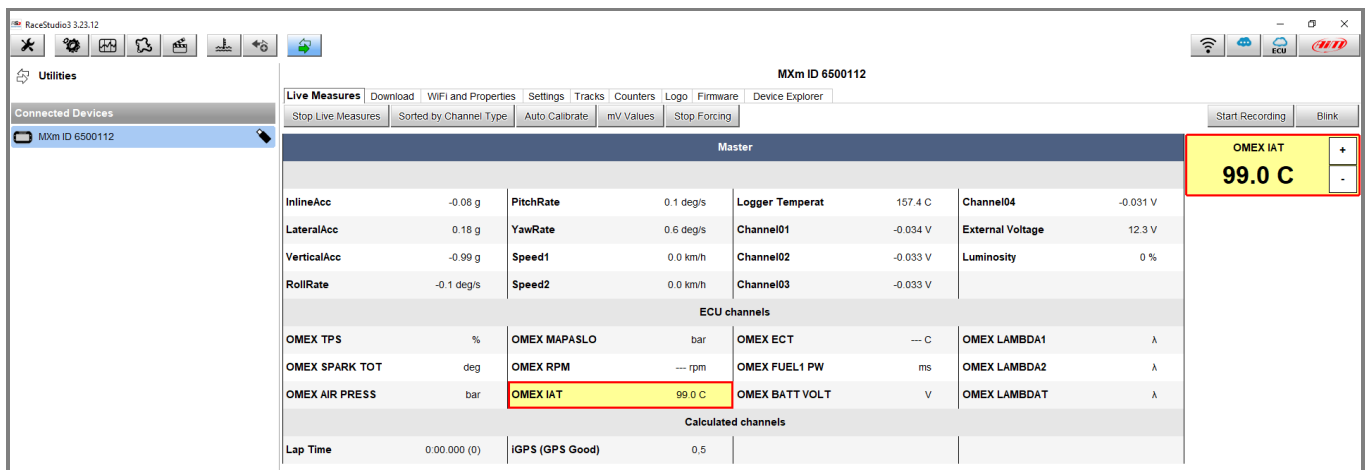


RS3

- At the pointer passing, in each channel box a gear icon appears: clicking it, it is possible to set the channel measure unit, the displayed decimal figures and force the channel value. A popup window appears, which allows to manually insert the new value. Clicking "OK", the channel will be surrounded by a red frame (all the forced channels will), assuming the wanted value.



- If the channel window is clicked, it will be highlighted in yellow and it will appear into a dedicated column on the right: the forced value can be changed pressing "+" and "-".





### RS3

- Once the correct device functioning will be verified, clicking on the gear icon, it is possible to change the channel value again (Change Channel Value) or return to the real value (Stop Forcing Channel Values).  
If two or more channels values are forced, it is possible to reset all of them clicking "Stop Forcing" (this button is enabled at the first value forcing).

