



FAQ

Frequently asked questions

Wi-Fi access protection





Race Studio 3

Wi-Fi access protection

Question:

How can I protect my device Wi-Fi access?

Answer:

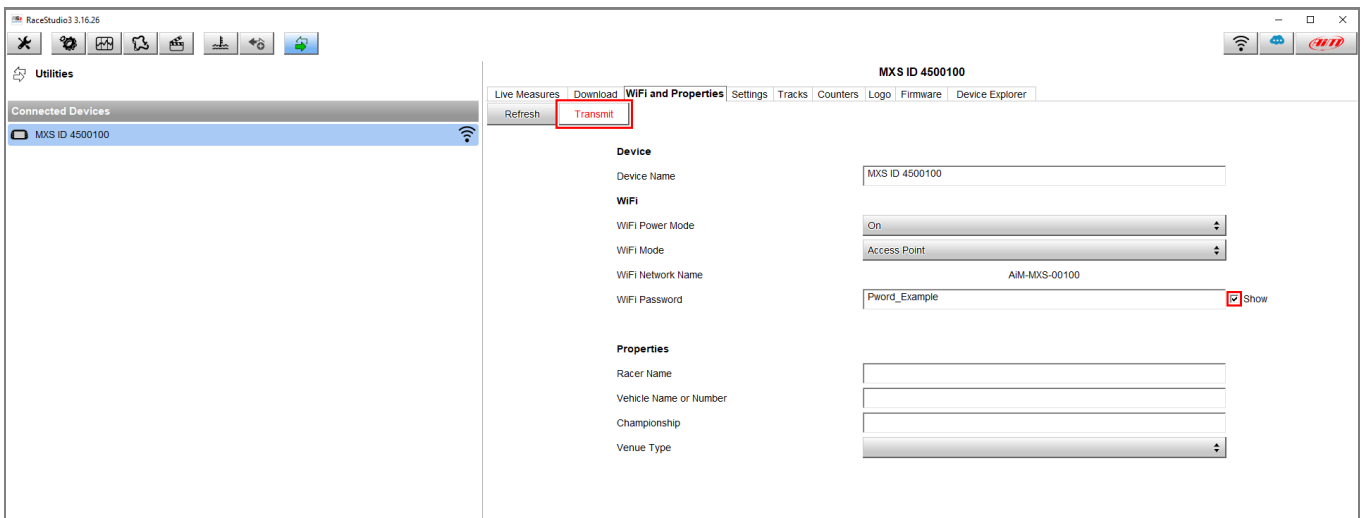
The access through Wi-Fi connection to the AiM devices can be protected by inserting a password in the way shown below:

- Open Race Studio 3
- Connect your device (via Wi-Fi or USB)
- Enter in the Device section and, from the Connected Devices column, click on your device identifier: in the right area the dedicated menu appears, this shows the Live Measures by default.

MXS ID 4500100	
Lap Time	0 00.000 (0)
RPM	0 rpm
Speed3	0.0 km/h
Channel02	2 mV
Channel05	1 mV
Channel08	2 mV
AccelerometerZ	-1.01 g
GyroZ	0.02 deg/s
GPS (No GPS Data)	0.0 km/h
Logger Temperature	33.8 C
Speed1	0.0 km/h
Speed4	0.0 km/h
Channel03	2 mV
Channel06	2 mV
AccelerometerX	-0.00 g
GyroX	-0.02 deg/s
Luminosity	0.00 %
External Voltage	12.0 V
Speed2	0.0 km/h
Channel01	2 mV
Channel04	1 mV
Channel07	2 mV
AccelerometerY	-0.00 g
GyroY	0.01 deg/s
Fuel Used	---

Wi-Fi

- Enter in the Wi-Fi and Properties tab, from which is possible to modify the device name, the Wi-Fi settings and the information regarding racer, vehicle, championship and venue type. In the Wi-Fi password bar, insert the desired password (at least 8 characters; tick the “Show” box on the right to display them).



Once the process is done, click Transmit to transmit the new settings to the device.