



FAQ

Frequently asked questions

Configuring SmartyCam with SoloDL



Configuring

1 – Configuring SmartyCam with SoloDL

Question:

How can I configure SmartyCam HD/GP HD (from here onwards SmartyCam) with SoloDL?

Answer:

For a good SmartyCam-SoloDL communication you have to:

- physically connect the devices
- configure SoloDL using Race Studio 2 software
- configure SmartyCam using Race Studio 3 software

1.1 – Physical connection

To physical connect the devices use the CAN cable you find in SmartyCam kit and connect camera "ext" connector to SoloDL CAN EXP connector (5 pins). Solo DL 7 pins connector is needed to connect SoloDL to the vehicle ECU (via CAN, K-Line or RS232).



Configuring

1.2 – Configuring SoloDL with Race Studio 2

To configure SoloDL you should have installed Race Studio 2 software on your PC.

Last releases are always downloadable from Download area -> Software section of AiM website www.aim-sportline.com.

Follow these steps:

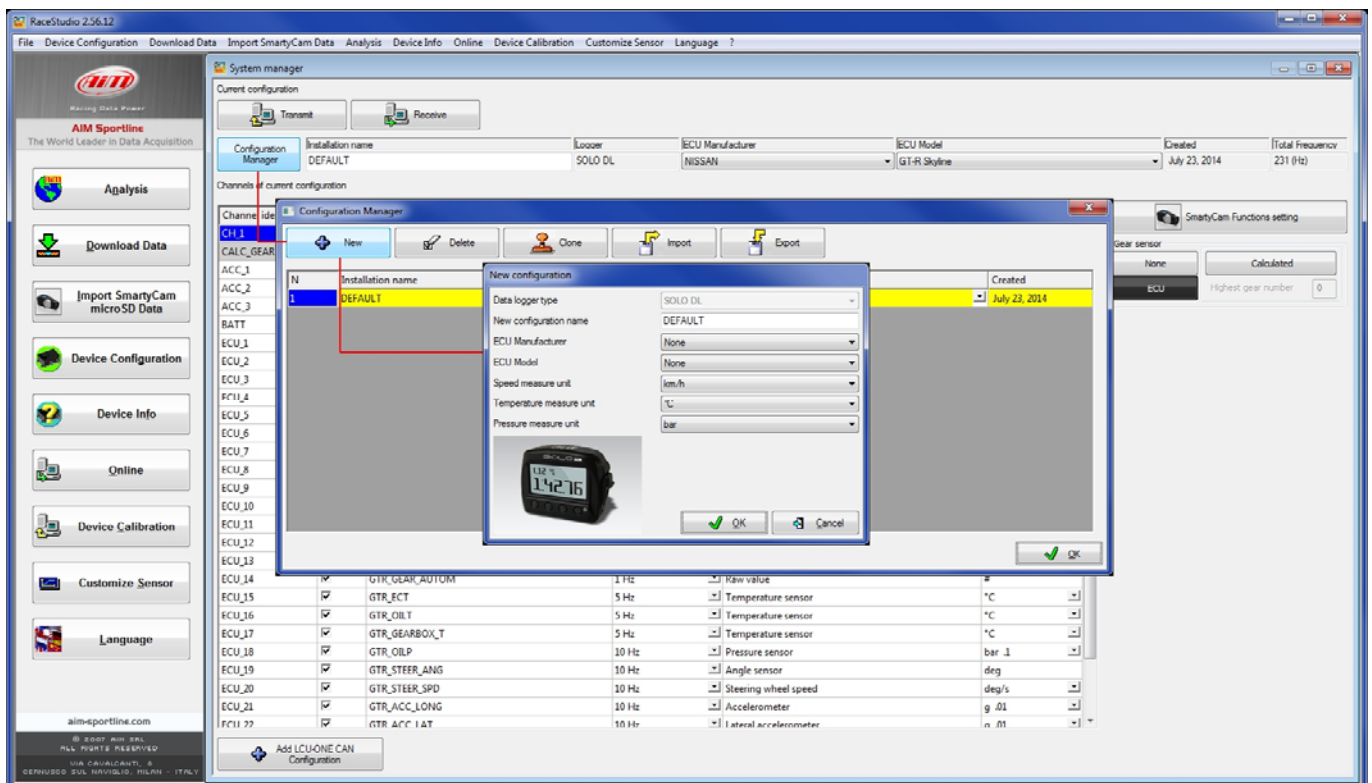
- run Race Studio 2
- click "Device Configuration"
- double click "Solo DL"



Configuring

SoloDL configuration window shows up. To create a new configuration:

- press "Configuration Manager" and the related panel shows up
- press "New" and "New configuration" panel shows up
- select "ECU Manufacturer" and "ECU Model" corresponding to the vehicle you are going to install your SoloDL on; available ECUs are listed on Download area-> ECU Connections of AiM website www.aim-sportline.com.

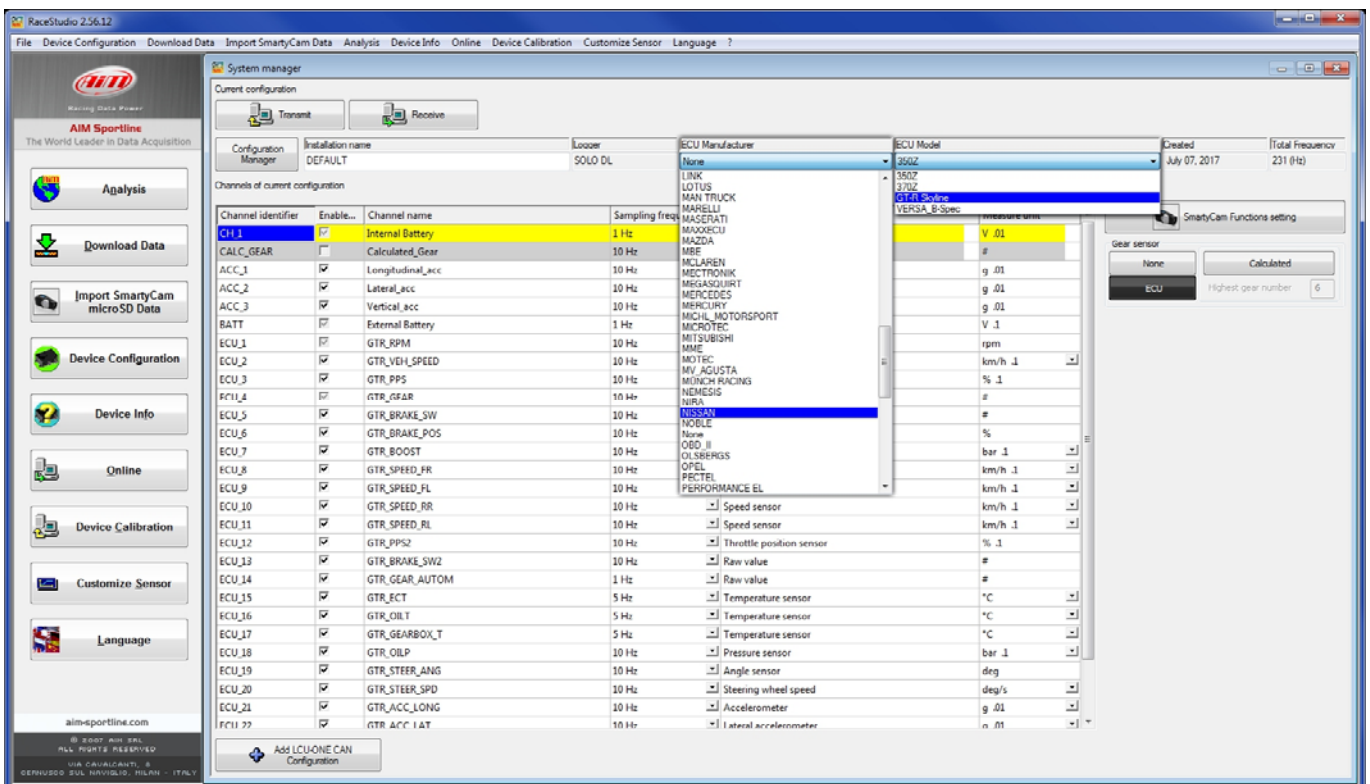




Configuring

In the top bar you can always see and modify the ECU you set. In the example below ECU set is "Nissan" "GT-R Skyline".

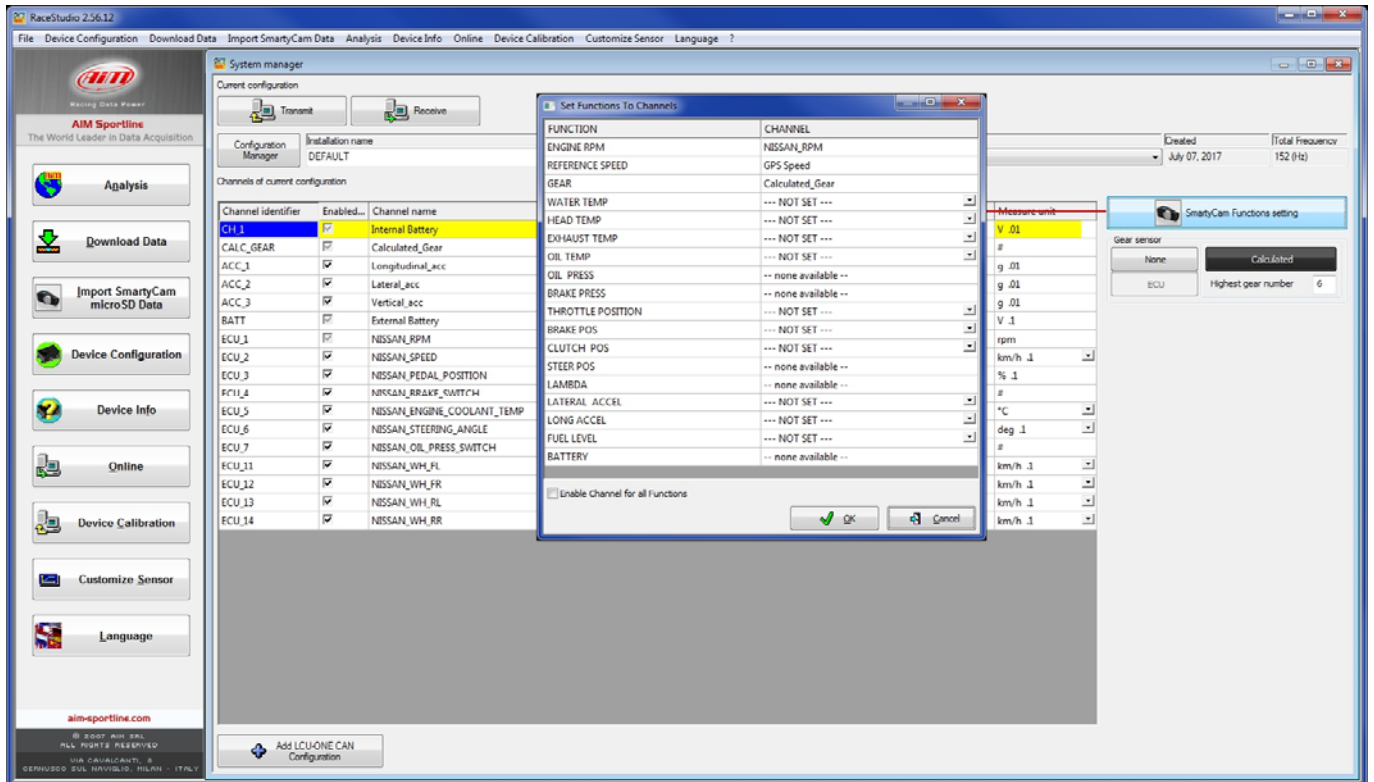
Once the ECU set all available channels are shown by the software. Some channels can be enabled/disabled using the checkbox in "Enable.." column, others, like sampling frequency and measure unit can be modified.





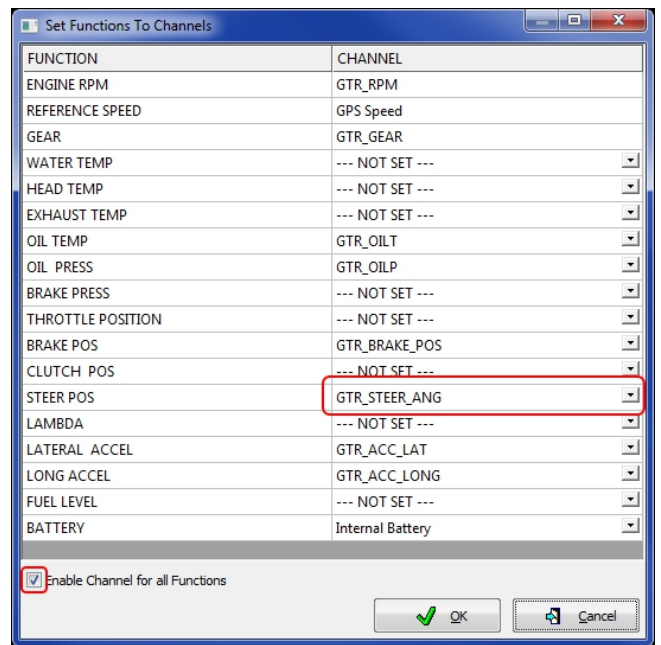
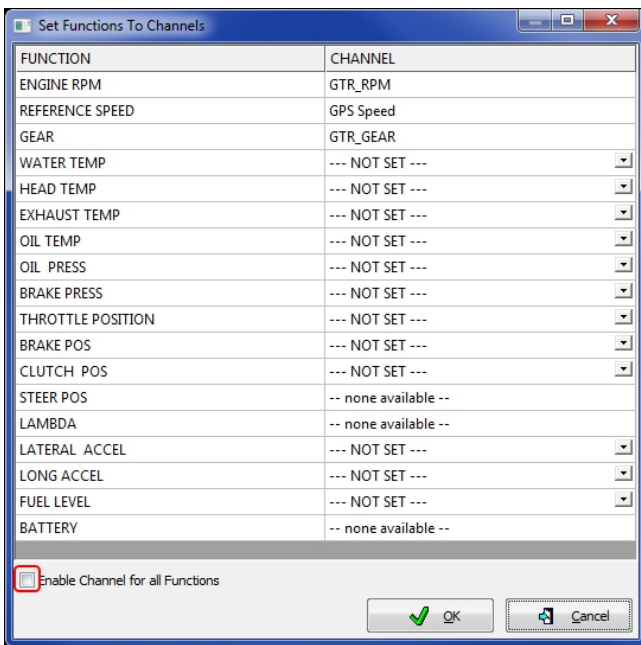
Configuring

To set SmartyCam function press the related button.

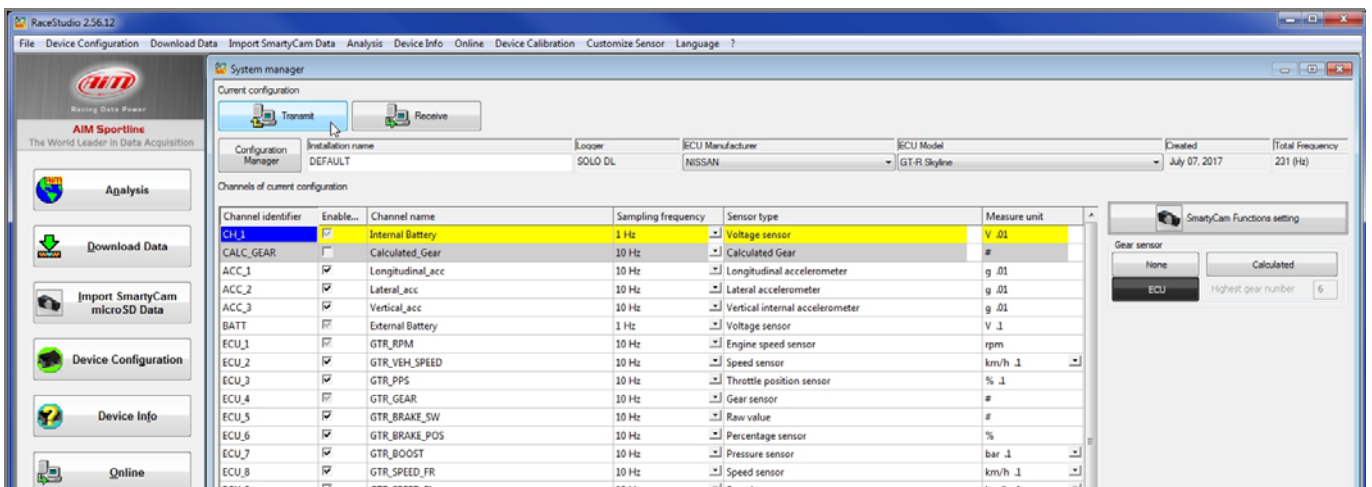


Configuring

The software shows a panel – bottom left – that allows to associate available functions (left column) to SmartyCam channels (right column). Channels list is filtered according to the functions set. To set functions different from default ones enable “Enable Channel for all Functions” checkbox (image below on the right). Once all channels set press “OK”.



To transmit the configuration to SoloDL press “Trasmit”.



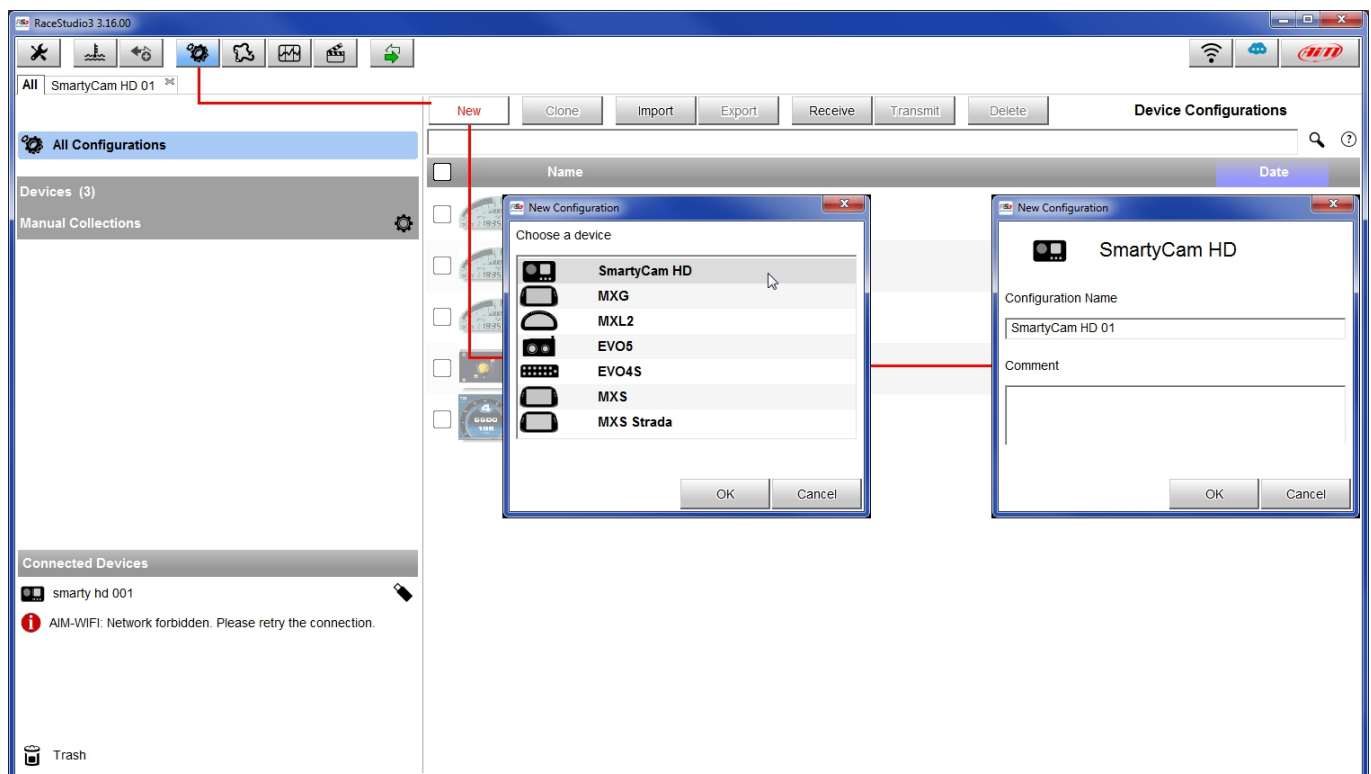
Configuring

1.3 – Configuring SmartyCam with Race Studio 3

To configure SmartyCam you should have installed Race Studio 3¹ software on your PC. Last releases are always downloadable from Download area -> Software section of AiM website www.aim-sportline.com.

Follow these steps:

- run Race Studio 3
- connect SmartyCam to the PC using the mini USB cable included in the kit
- press “Configurations” icon
- press “New”
- select “SmartyCam” and press “OK”
- fill in configuration name and press “OK”



¹ Please note: Race Studio 2 does not support AiM cameras



Configuring

SmartyCam configuration page shows up.

- on the right you see a number of overlay sets you can select and drag and drop in left part of the window
- bottom of the window you see each overlay layers, the settings of which you can modify.

Function	Unit	Scale
Engine RPM	rpm	10000
Speed	km/h	300
Brake Pos	%	0 100
Throttle Pos	%	0 100
Gear	#	