



## FAQ

Frequently asked questions

---

# Displaying lambda value on SmartyCam HD





## Expansions

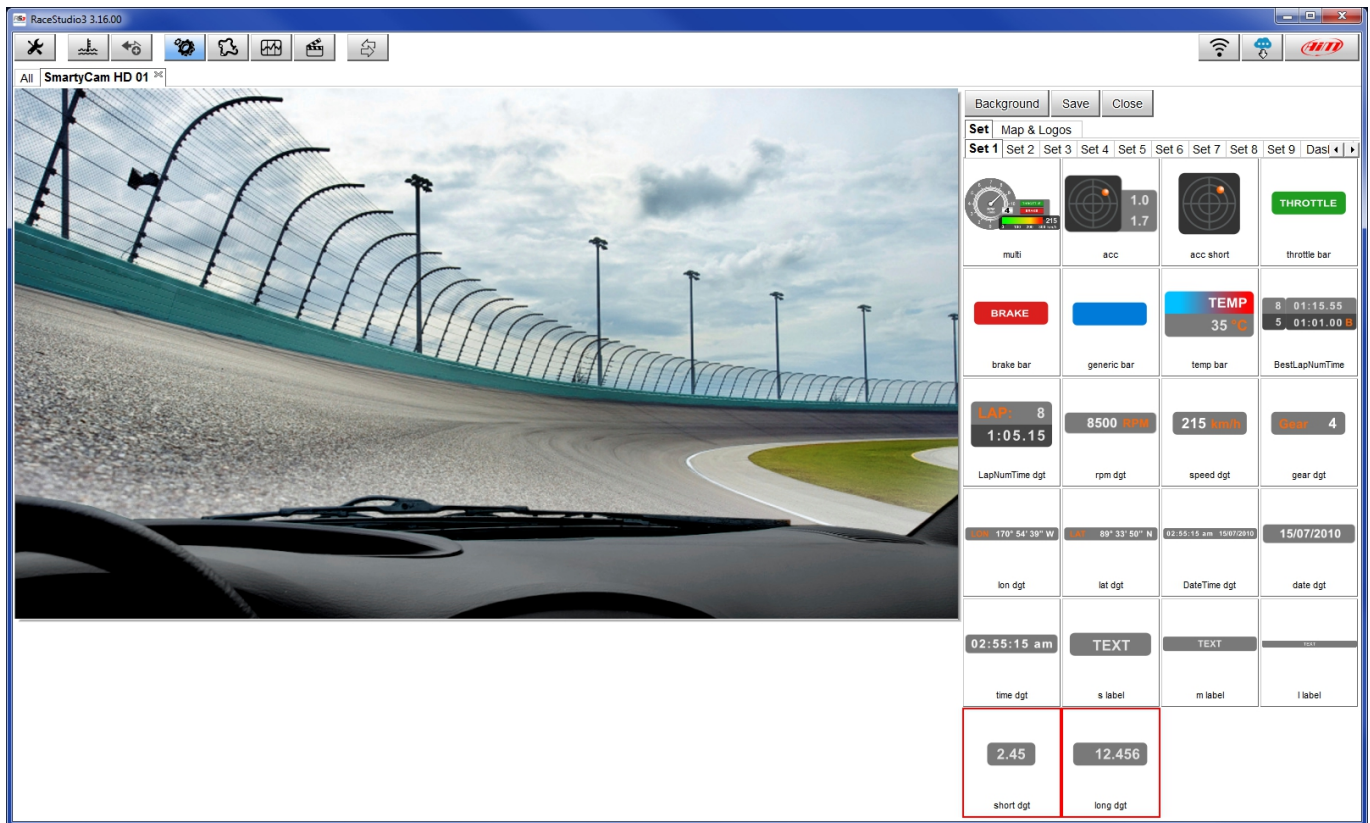
# Displaying lambda value on SmartyCam HD

### Question:

How can I show Lambda value in my SmartyCam HD overlay?

### Answer:

To overlay the lambda value just choose "dgt" overlay in the SmartyCam Configuration main page (red box below).



## Expansions

Drag and drop it to the desired position. In order to assign the lambda value to that overlay, open the drop-down menu clicking "Battery Voltage" and choose "Lambda". When this operation is done, click "Transmit" to send the configuration to the camera.

